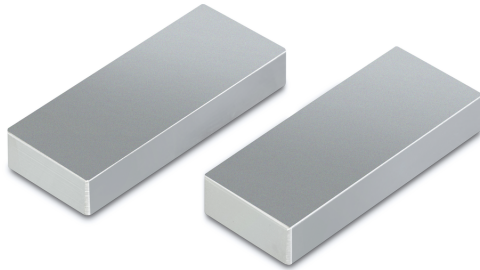


# KERN AD 0006

**KERN**

Jaws with smooth surface



## Category

Brand	Sauter
Product category	Measurementtechnology
Product group	Jaws, smooth

## Construction

Dimension (W×D×H)	25×10×8 mm
Dimension housing (W×D×H)	25×10×8 mm
Dimensions completely mounted (W×D×H)	25×10×8 mm
Material	steel
Material display housing	Steel
Tensile/compressive force [Max]	400 N
Maximum clamp width	25 mm
Clamping width	8 mm

## Environmental conditions

Storage temperature [Min]	-10 °C
Storage temperature [Max]	40 °C

## Packing & Shipping

Readability force [d] (N)	14 d
Dimensions packaging (W×D×H)	25×10×8 mm
Net weight	0,036 kg
Shipping method	Parcel service
Net weight approx.	0,05 kg
Gross weight approx.	0,05 kg
Shipping weight	0,1 kg

## Pictograms

STANDARD



1 DAY